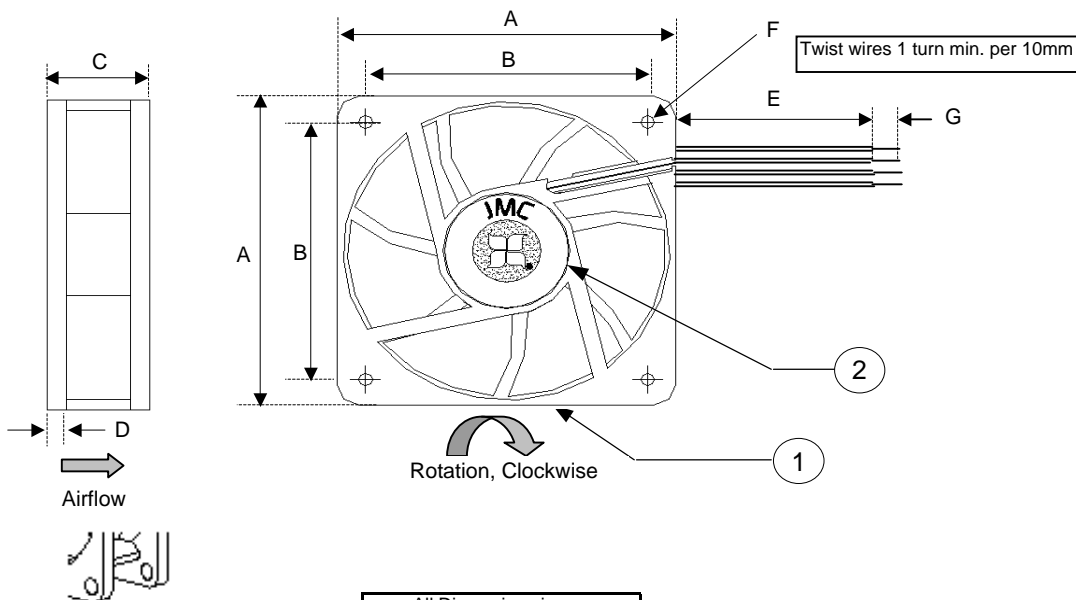


RELEASED FOR PRODUCTION



Frame Type (Open Flange)

WIRE DESIGNATION		
1	Black	GND
2	Yellow	PWR (+12Vdc)
3	Green	SIGNAL (TACH)
4	Blue	PWM

All Dimensions in mm	
A	92.0 +/- 0.5
B	82.5 +/-0.3
C	25.0 +/-0.5
D	4.0+/-0.3
E	300 +/- 25
F	8 X 4.4 Dia +/- 0.3
G	6.3 +/- 1.0

MECHANICAL

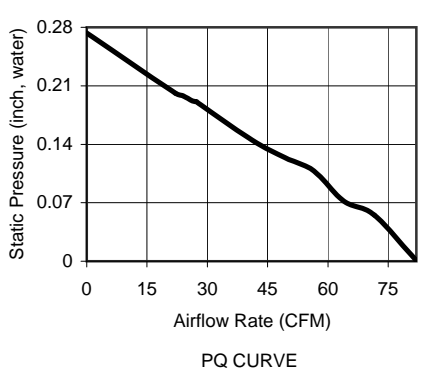
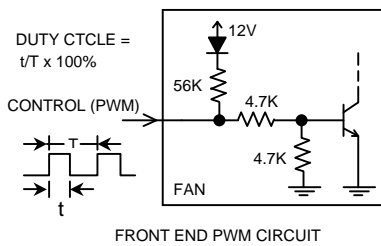
ITEM	SPECIFICATION	UNITS / NOTES
Speed	900+/-50% / 4000 +/-10%	RPM at 12 Vdc
Airflow	82.0	CFM in Free Air
Static Pressure	0.27	Inch, H ₂ O
Bearing Type	Dual Ball	N/A
Operating Temp	(-)10 to 60	Deg C
Storage Temp	(-) 40 to 70	Deg C
Noise Level	42.5	dBA Max at 1M

PHYSICAL

Blade Material	UL 94V-0	N/A
Frame Material	UL 94V-0	N/A
Wire Size	26	AWG
Wire Type	UL 1007	N/A
Wire Assembly	First Slot Only	N/A
Regulatory Approvals	UL CUL TUV	N/A
Net Weight	TBD	Grams

ELECTRICAL

Operating Voltage	10.8- 13.2	Vdc
Start up Duty Cycle	30	%
Rated Current (at 12V)	0.55	Amp
Input Power (at 12V)	6.6	Watts
Tach Output	2	Pulses/Rev
Polarity Protection	Yes	N/A
Motor Protection	By Auto-Restart	N/A

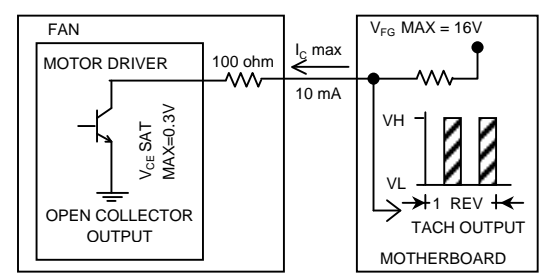


Revision History				
EC No	REV	Date	Description	Approvals
-	REL	4/22/08	RELEASED DWG.	JE
110672	A	10/1/08	Uptd Current to Cor spec	DG
110785	B	9/29/10	Correct Model Nbr.	JE

- NOTES:**
1. THIS FAN AND ALL OF ITS COMPONENTS COMPLY WITH THE REQUIREMENTS OF RoHS DIRECTIVE 2002/95/EC
 2. BALANCE GRADE MUST BE G2.5 OR BETTER IN ACCORDANCE WITH ISO 1940
 3. THIS IS A BASE MODEL FAN. ANY CHANGES TO THE SPECIFICATIONS WILL REQUIRE A NEW PART NUMBER AND DRAWING.



PWM DUTY CYCLE vs. FAN SPEED



TACH OUTPUT ELECTRICAL CHARACTERISTICS

2	1	Logo Label	L09200B0004	JMC
1	1	Fan Model	9025 - 12	JMC
Item	Qty	Description	Part Number	MFG
Austin Texas, USA Dong Guan, PRC			FAN, 92 x 25 mm, 12Vdc Dual Ball, Base Model	
Drawn By P. Chapman			Size A1	Drawing Number 09200B0004
Electrical Engineer J. Elmo		Scale: None		Sheet 1 of 1

PROPRIETARY NOTE