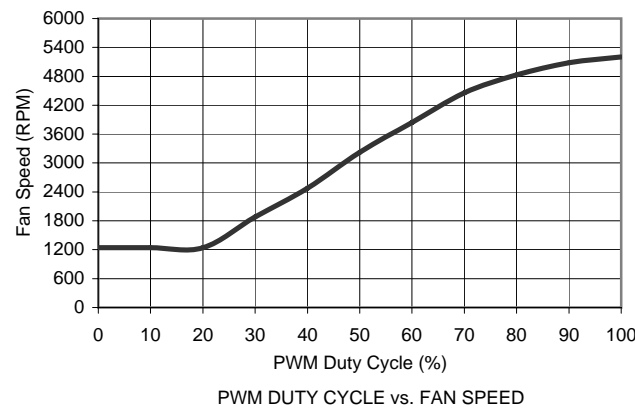
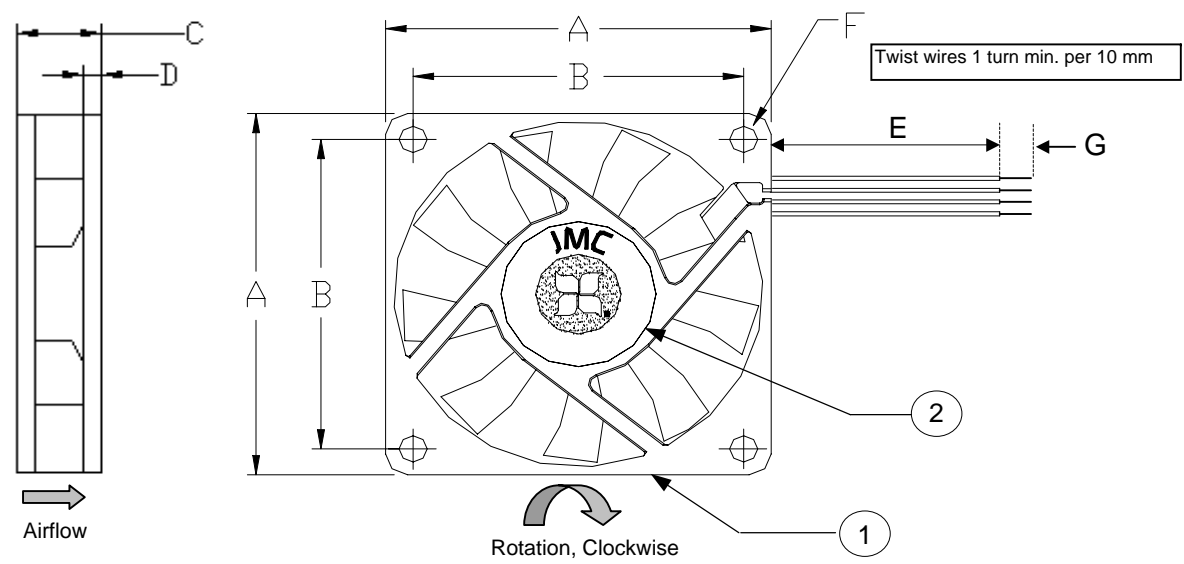


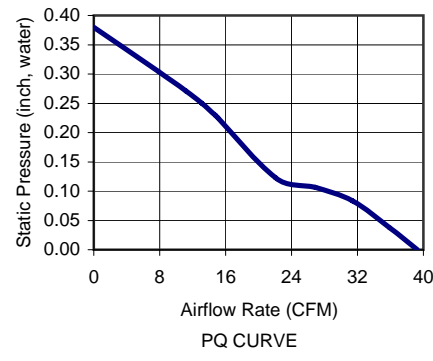
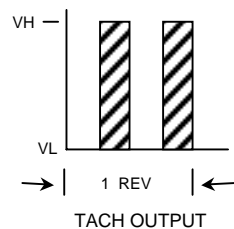
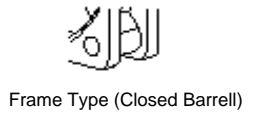
Revision History				
EC No	REV	Date	Description	Approvals
NA	X00	5/24/08	Created Drg.	SA
NA	X01	8/5/08	updt blade-wire-PQ curve	DG

- NOTES
- THIS FAN AND ALL OF ITS COMPONENTS COMPLY WITH THE REQUIREMENTS OF RoHS DIRECTIVE 2002/95/EC
  - BASE MODEL FAN. ANY CHANGES TO THE SPECIFICATION REQUIRES NEW PART NUMBER.

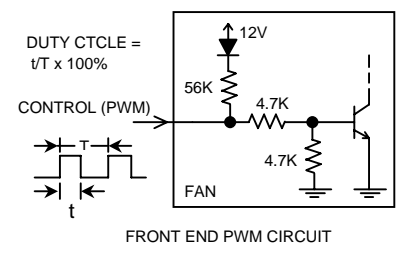


WIRE DESIGNATION	
Wire Color	Function
Black	GND (-)
Yellow	PWR (12Vdc)
Green	TACH
Blue	PWM

All Dimensions in mm	
A	70.0 +/- 0.5
B	61.5 +/- 0.3
C	15.0 +/- 0.5
D	3.4 +/- 0.3
E	300 +/- 25
F	4 X 4.3 Dia +/- 0.3
G	6.4 +/- 1.0



	ITEM	SPECIFICATION	UNITS / NOTES
MECHANICAL	Speed	5200 +/-10%	RPM at 12 Vdc
	Airflow	39.3	CFM in Free Air
	Static Pressure	0.38	Inch, H <sub>2</sub> O
	Bearing Type	Dual Ball	N/A
	Operating Temp	(-) 10 to 70	Deg C
	Storage Temp	(-) 40 to 70	Deg C
	Noise Level	45.0	dBA Max at 1M
PHYSICAL	Blade Material	UL 94V-0	N/A
	Frame Material	UL 94V-0	N/A
	Wire Size	24	AWG
	Wire Type	UL 1007	N/A
	Wire Assembly	First Slot Only	N/A
ELECTRICAL	Regulatory Approvals	UL CUL TUV	N/A
	Net Weight	TBD	Grams
	Operating Voltage	10.8 - 13.2	Vdc
	Start up Duty Cycle	30.0	%
	Rated Current	0.55	Amp
	Input Power	6.60	Watts
	Tach Output	2	Pulses/Rev
	Polarity Protection	Yes	N/A
Motor Protection	By Auto-Restart	N/A	



2	1	Logo Label	L07000B0004	JMC
1	1	Fan Model	7015 - 12	JMC
Item	Qty	Description	Part Number	MFG
Austin Texas, USA Dong Guan, PRC			Fan, 70x15 mm, 12Vdc, PWM Dual Ball, Base Model	
Drawn By S. Apsangi			Size A1	Drawing Number 07000B0004
Engineer J. Elmo		Scale: None		Sheet 1 of 1

PROPRIETARY NOTE