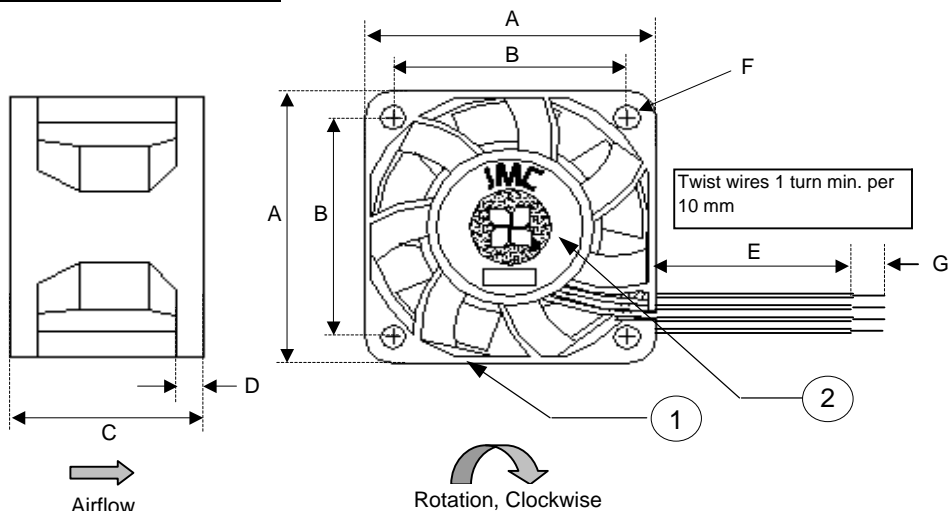


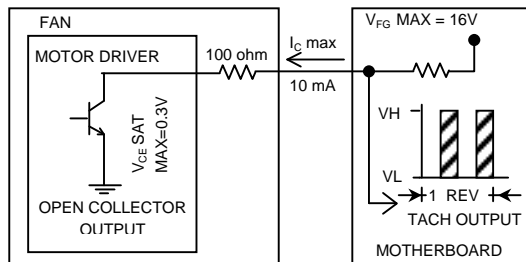
**RELEASED FOR PRODUCTION**



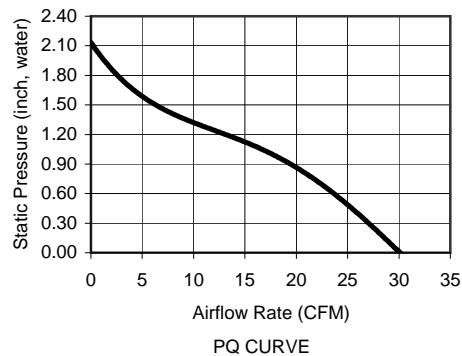
All Dimensions in mm	
A	40.0 +/- 0.5
B	32.0 +/- 0.3
C	28.0 +/- 0.5
D	4.0 +/- 0.3
E	300 +/- 25
F	4 X 3.5 +/- 0.3
G	6.3 +/- 1.0

WIRE DESIGNATION	
GND (-)	Black
PWR (+)	Yellow
Signal (Tach)	Green
PWM	Blue

Frame Type (Closed Barrell)



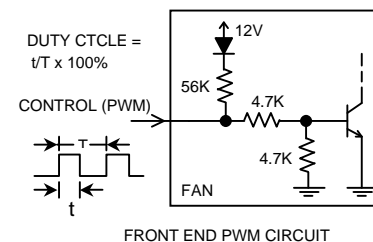
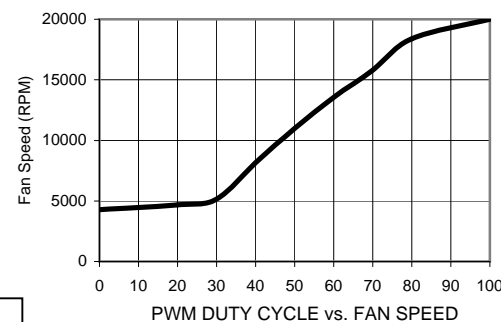
TACH OUTPUT ELECTRICAL CHARACTERISTICS



Revision History				
EC No	REV	Date	Description	Approvals
110681	D	12/4/08	Updt Current & PWM	DG
110726	E	6/5/09	Updt Current	JE
110799	F	1/24/11	Updt Current	JE

**NOTES**

- 1) THIS FAN AND ALL OF ITS COMPONENTS COMPLY WITH THE REQUIREMENTS OF RoHS DIRECTIVE 2002/95/EC
- 2) UTILIZATION OF VIBRATION ISOLATION GROMMETS OR MOUNTS IS RECOMMENDED FOR FAN SPEED HIGHER THAN 15,000 RPM.
- 3) THIS IS A BASE MODEL FAN. ANY CHANGES TO THE SPECIFICATIONS WILL REQUIRE A NEW PART NUMBER AND DRAWING.
- 4) RPM TOLERANCE IS +/-30% AT DUTY CYCLES BELOW 30%.



	ITEM	SPECIFICATION	UNITS / NOTES
MECHANICAL	Speed	20,000 +/- 10%	RPM at 12 Vdc
	Airflow	30.0	CFM in Free Air
	Static Pressure	2.10	Inch, H <sub>2</sub> O
	Bearing Type	Ball, Dual	N/A
	Operating Temp	(-)10 to 60	Deg C
	Storage Temp	(-)40 to 70	Deg C
	Noise Level	61.0	dBA Max at 1M
PHYSICAL	Blade Material	UL 94V-0	N/A
	Frame Material	UL94V-0	N/A
	Wire Size	26.0	AWG
	Wire Type	UL 1061	N/A
	Wire Assembly	First Slot Only	N/A
	Regulatory Approvals	UL CUL TUV	N/A
	Net Weight	46	Grams
ELECTRICAL	Operating Voltage	10.8 - 12.6	Vdc
	Start up PWM duty cycle	30	%
	Rated Current	0.94 (1.20 Max)	Amp
	Input Power	11.28 (14.4 Max)	Watts
	Tach Output	2	Pulses/Rev
	Polarity Protection	Yes	N/A
	Motor Protection	By Auto-Restart	N/A

2	1	Logo Label	L04004B0004	JMC
1	1	Fan Model	4028-12	JMC
Item	Qty	Description	Part Number	MFG
Austin Texas, USA Dong Guan, PRC		<b>JMC</b> The Fan Company	Fan, 40x28 FV, 12Vdc DBB, Base Model	
Mechanical Engineer S.Apsangi	Size A1	Drawing Number 04004B0004	Rev F	
Electrical Engineer J. Elmo	Scale: None		Sheet 1 of 1	

**PROPRIETARY NOTE**

This document is the property of JMC products and contains sensitive and confidential information. Neither this document nor any information it contains may be reproduced or distributed, without written permission by JMC products.