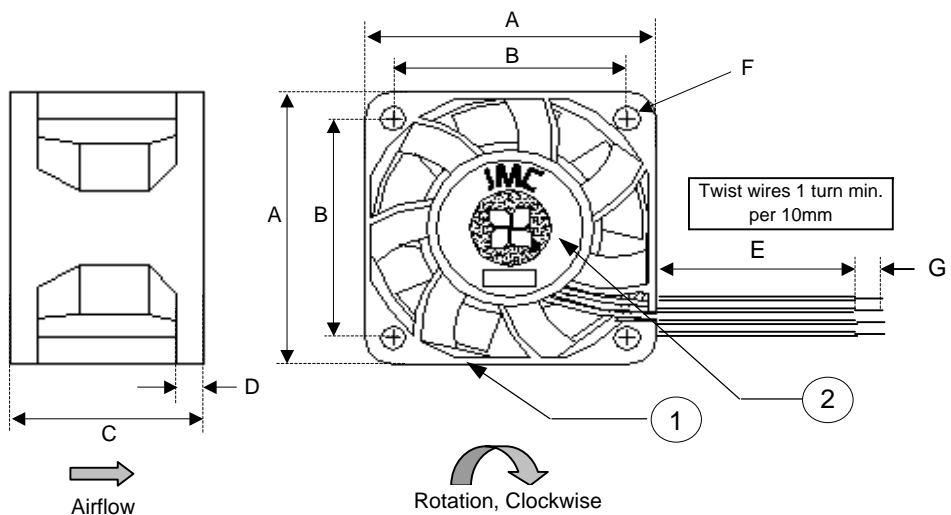
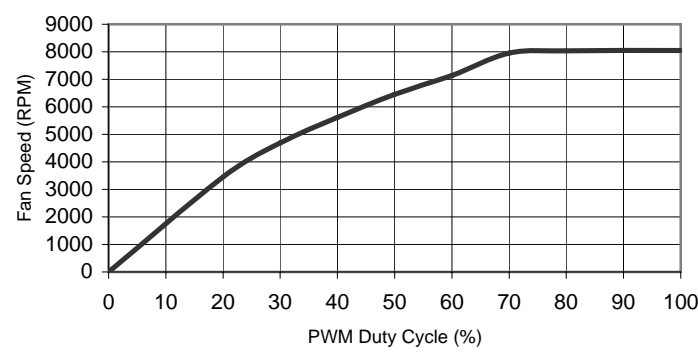


Revision History				
EC No	REV	Date	Description	Approvals
NA	X00	6/6/08	Created Drg.	SA
NA	X01	5/12/09	Updated PWM	JE



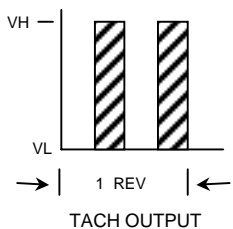
- NOTES
- THIS FAN AND ALL OF ITS COMPONENTS COMPLY WITH THE REQUIREMENTS OF RoHS DIRECTIVE 2002/95/EC
  - BASE MODEL FAN - ANY CHANGES TO SPECIFICATION REQUIRES NEW PART NUMBER.
  - RPM TOLERANCE IS +/-30% AT DUTY CYCLES BELOW 30%.



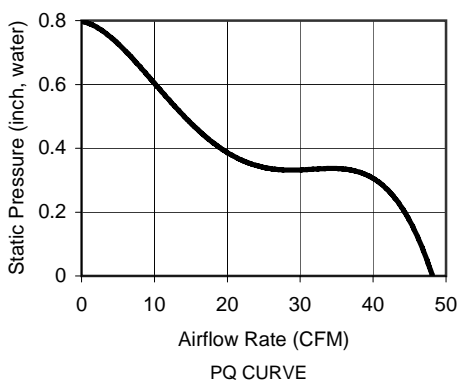
WIRE DESIGNATION	
Wire Color	Function
Black	GND (-)
Yellow	PWR (12Vdc)
Green	TACH
Blue	PWM

All Dimensions in mm	
A	60 +/- 0.5
B	50.1 +/- 0.3
C	38 +/- 0.5
D	4 +/- 0.3
E	300 +/- 25
F	8 X 4.4 +/- 0.3
G	6.4 +/- 1.0

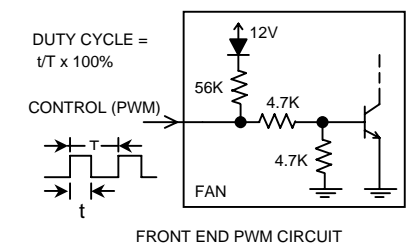
Frame Type (Open Flange)



	ITEM	SPECIFICATION	UNITS / NOTES
MECHANICAL	Speed	8000 +/- 10%	RPM at 12 Vdc
	Airflow	48.5	CFM in Free Air
	Static Pressure	0.8	Inch, H <sub>2</sub> O
	Bearing Type	Dual Ball	N/A
	Operating Temp	(-)10 to 60	Deg C
	Storage Temp	(-) 40 to 70	Deg C
	Noise Level	60.0	dBA Max at 1M
	Blade Material	UL 94V-0	N/A
	Frame Material	UL 94V-0	N/A
	Wire Size	26	AWG
PHYSICAL	Wire Type	UL 1007	N/A
	Wire Assembly	First Slot	N/A
	Regulatory Approvals	UL CUL TUV	N/A
	Net Weight	TBD	Grams
	Operating Voltage	10.8 - 13.2	Vdc
ELECTRICAL	Start up voltage	NA	Vdc
	Start up PWM duty cycle	30	%
	Rated Current	0.7 (0.87 Max)	Amp
	Input Power	8.4 (10.44 Max)	Watts
	Tach Output	2.0	Pulses/Rev
	Polarity Protection	Yes	N/A
	Motor Protection	By Autorestart	N/A



PWM DUTY CYCLE vs. FAN SPEED



2	1	Logo Label	L06004B0004	JMC
1	1	Fan Model	6038-12	JMC
Item	Qty	Description	Part Number	MFG

Austin Texas, USA Dong Guan, PRC	<b>JMC</b> The Fan Company	Fan, 60x38FV, 12Vdc Dual Ball, Base Model		
Drawn By S. Apsangi	Size A1	Drawing Number 06004B0004	Rev X01	
Engineer J. Elmo	Scale: None		Sheet 1 of 1	

PROPRIETARY NOTE