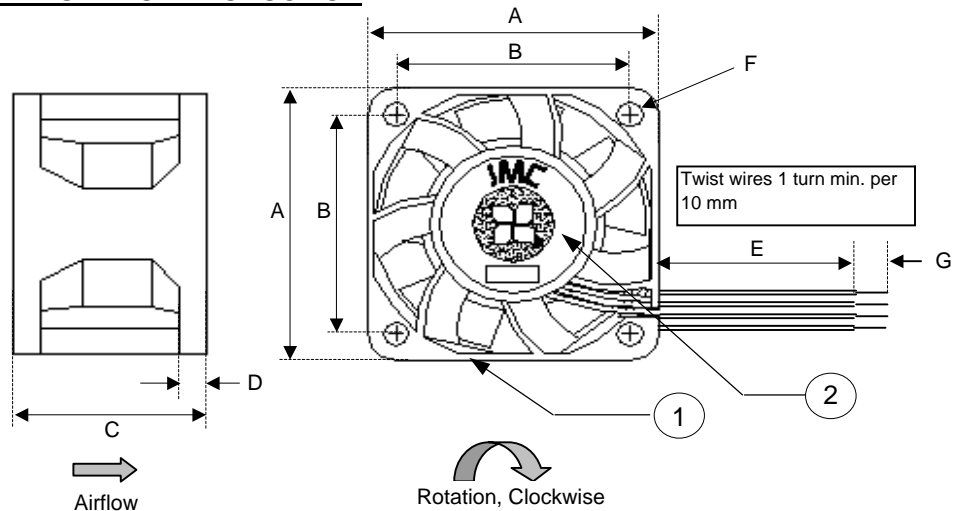


**RELEASED FOR PRODUCTION**

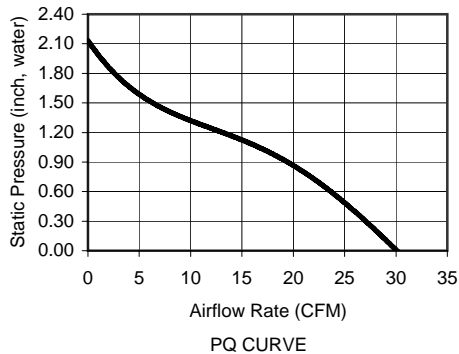
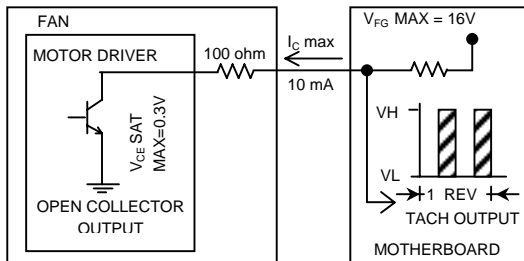


All Dimensions in mm	
A	40.0 +/- 0.5
B	32.0 +/- 0.3
C	28.0 +/- 0.5
D	4.0 +/- 0.3
E	300 +/- 25
F	4 X 3.5 +/- 0.3
G	6.3 +/- 1.0

WIRE DESIGNATION	
GND (-)	Black
PWR (+)	Yellow
Signal (Tach)	Green
PWM	Blue

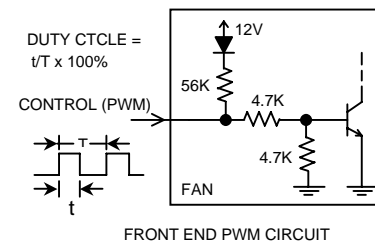
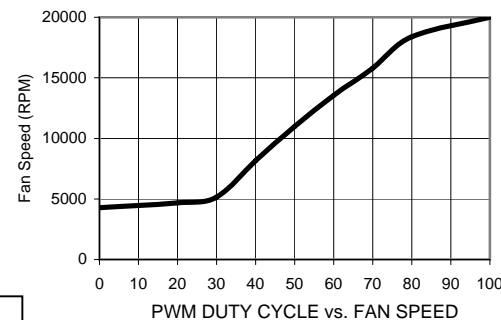
	ITEM	SPECIFICATION	UNITS / NOTES
MECHANICAL	Speed	20,000 +/- 10%	RPM at 12 Vdc
	Airflow	30.0	CFM in Free Air
	Static Pressure	2.10	Inch, H <sub>2</sub> O
	Bearing Type	Ball, Dual	N/A
	Operating Temp	(-)10 to 60	Deg C
	Storage Temp	(-)40 to 70	Deg C
	Noise Level	61.0	dBa Max at 1M
PHYSICAL	Blade Material	UL 94V-0	N/A
	Frame Material	UL94V-0	N/A
	Wire Size	26.0	AWG
	Wire Type	UL 1061	N/A
	Wire Assembly	First Slot Only	N/A
	Regulatory Approvals	UL CUL TUV	N/A
ELECTRICAL	Net Weight	46	Grams
	Operating Voltage	10.8 - 12.6	Vdc
	Start up PWM duty cycle	30	%
	Rated Current	0.94 (1.15 Max)	Amp
	Input Power	11.28 (13.8 Max)	Watts
	Tach Output	2	Pulses/Rev
	Polarity Protection	Yes	N/A
Motor Protection	By Auto-Restart	N/A	

Frame Type (Closed Barrell)



Revision History				
EC No	REV	Date	Description	Approvals
N/A	B	4/3/08	Update PWM curve	JE
110679	C	11/11/08	Updt PQ & Current	DG
110681	D	12/4/08	Updt Current & PWM	DG
110726	E	6/5/09	Updt Current	JE

- NOTES
- 1) THIS FAN AND ALL OF ITS COMPONENTS COMPLY WITH THE REQUIREMENTS OF RoHS DIRECTIVE 2002/95/EC
  - 2) UTILIZATION OF VIBRATION ISOLATION GROMMETS OR MOUNTS IS RECOMMENDED FOR FAN SPEED HIGHER THAN 15,000 RPM.
  - 3) THIS IS A BASE MODEL FAN. ANY CHANGES TO THE SPECIFICATIONS WILL REQUIRE A NEW PART NUMBER AND DRAWING.
  - 4) RPM TOLERANCE IS +/-30% AT DUTY CYCLES BELOW 30%.



2	1	Logo Label	L04004B0004	JMC
1	1	Fan Model	4028-12	JMC
Item	Qty	Description	Part Number	MFG
Austin Texas, USA Dong Guan, PRC		<b>JMC</b> The Fan Company	Fan, 40x28 FV, 12Vdc DBB, Base Model	
Mechanical Engineer S.Apsangi		Size A1	Drawing Number 04004B0004	Rev E
Electrical Engineer J. Elmo		Scale: None		Sheet 1 of 1

PROPRIETARY NOTE